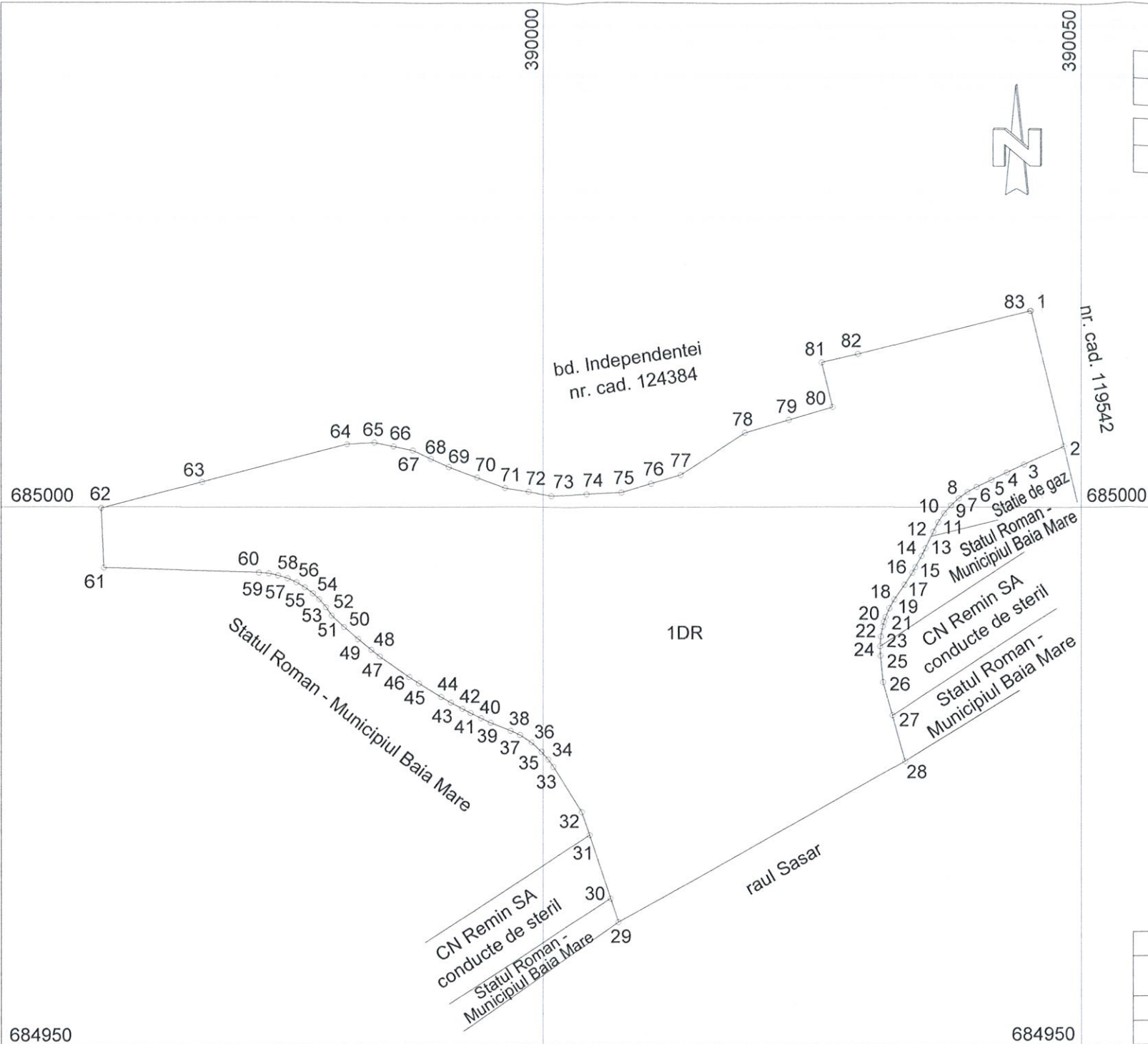


Plan de amplasament si delimitare a imobilului
Scara 1:500

Nr. cadastral	Suprafata masurata, [mp]	Adresa imobilului
	2043	mun. Baia Mare, jud. Maramures
Nr. Cartea Funciara		Unitatea Administrativ Teritoriala (UAT)
		BAIA MARE



d 1-2 = 12.90 m	d 29-30 = 2.32 m	d 57-58 = 0.90 m
d 2-3 = 4.03 m	d 30-31 = 6.19 m	d 58-59 = 0.90 m
d 3-4 = 1.75 m	d 31-32 = 2.27 m	d 59-60 = 0.94 m
d 4-5 = 1.63 m	d 32-33 = 4.98 m	d 60-61 = 14.42 m
d 5-6 = 1.51 m	d 33-34 = 0.85 m	d 61-62 = 5.53 m
d 6-7 = 0.99 m	d 34-35 = 0.96 m	d 62-63 = 9.68 m
d 7-8 = 1.00 m	d 35-36 = 1.26 m	d 63-64 = 13.98 m
d 8-9 = 0.97 m	d 36-37 = 1.29 m	d 64-65 = 2.57 m
d 9-10 = 0.98 m	d 37-38 = 0.96 m	d 65-66 = 1.80 m
d 10-11 = 0.99 m	d 38-39 = 2.00 m	d 66-67 = 1.80 m
d 11-12 = 0.99 m	d 39-40 = 0.98 m	d 67-68 = 1.83 m
d 12-13 = 1.70 m	d 40-41 = 1.11 m	d 68-69 = 1.83 m
d 13-14 = 0.80 m	d 41-42 = 0.85 m	d 69-70 = 2.79 m
d 14-15 = 1.20 m	d 42-43 = 1.20 m	d 70-71 = 2.80 m
d 15-16 = 0.60 m	d 43-44 = 1.05 m	d 71-72 = 2.21 m
d 16-17 = 1.31 m	d 44-45 = 2.41 m	d 72-73 = 2.21 m
d 17-18 = 1.67 m	d 45-46 = 1.06 m	d 73-74 = 3.27 m
d 18-19 = 0.97 m	d 46-47 = 3.30 m	d 74-75 = 3.27 m
d 19-20 = 0.89 m	d 47-48 = 1.01 m	d 75-76 = 2.86 m
d 20-21 = 0.45 m	d 48-49 = 1.57 m	d 76-77 = 2.86 m
d 21-22 = 0.47 m	d 49-50 = 1.75 m	d 77-78 = 7.08 m
d 22-23 = 0.93 m	d 50-51 = 1.56 m	d 78-79 = 4.26 m
d 23-24 = 0.90 m	d 51-52 = 0.94 m	d 79-80 = 4.25 m
d 24-25 = 0.89 m	d 52-53 = 0.98 m	d 80-81 = 4.26 m
d 25-26 = 2.47 m	d 53-54 = 0.81 m	d 81-82 = 3.47 m
d 26-27 = 3.19 m	d 54-55 = 0.93 m	d 82-83 = 16.56 m
d 27-28 = 4.41 m	d 55-56 = 0.93 m	d 83-1 = 0.09 m
d 28-29 = 30.51 m	d 56-57 = 0.92 m	

A. Date referitoare la teren			
Nr. parcela	Categorie de folosinta	Suprafata [mp]	Mentiuni
1	DR	2043	Intravilan. Neimprejmuit.
TOTAL		2043	Coridor de expropriere - Tronson 1.

B. Date referitoare la constructii			
Cod constructie	Destinatia	Supraf. constr. la sol, [mp]	Mentiuni
-	-	-	-
TOTAL		-	-

Suprafata totala masurata a imobilului = 2043 mp
Suprafata din act = 2043 mp

Executant S.C. TOPO EXPERT S.R.L. Ing. Ardelean Vasile Alexandru Confirm executarea masuratorilor la teren, corectitudinea intocmirii documentatiei cadastrale si corespondenta acesteia cu realitatea din teren Seria RO-B-J Nr. 0612 Clasa II S.C. TOPO EXPERT S.R.L. A.N.C.P.I.	Inspector Confirm introducerea imobilului in baza de date integrata si atribuirea numarului cadastral Semnatura si parafa Stampila BCPI Data: 19.03.2019
--	--